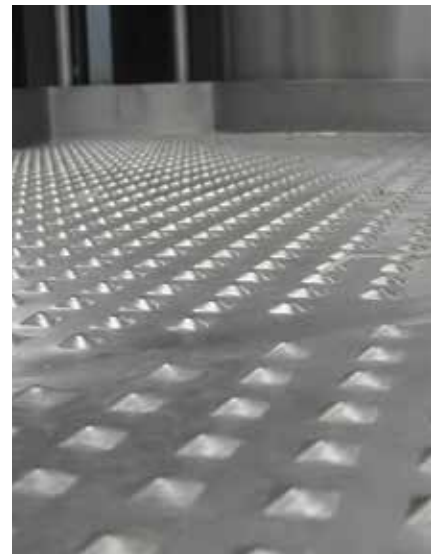
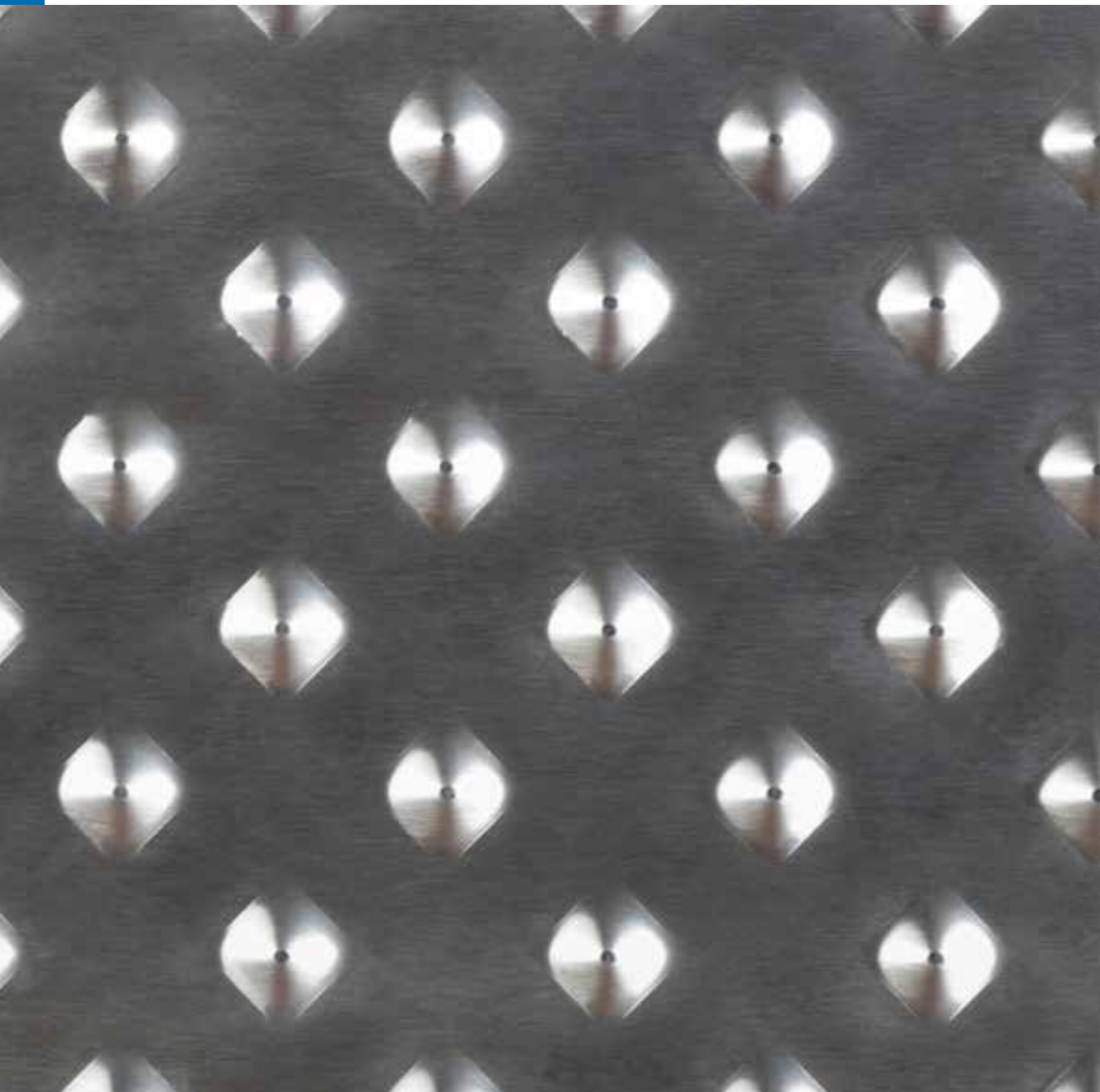


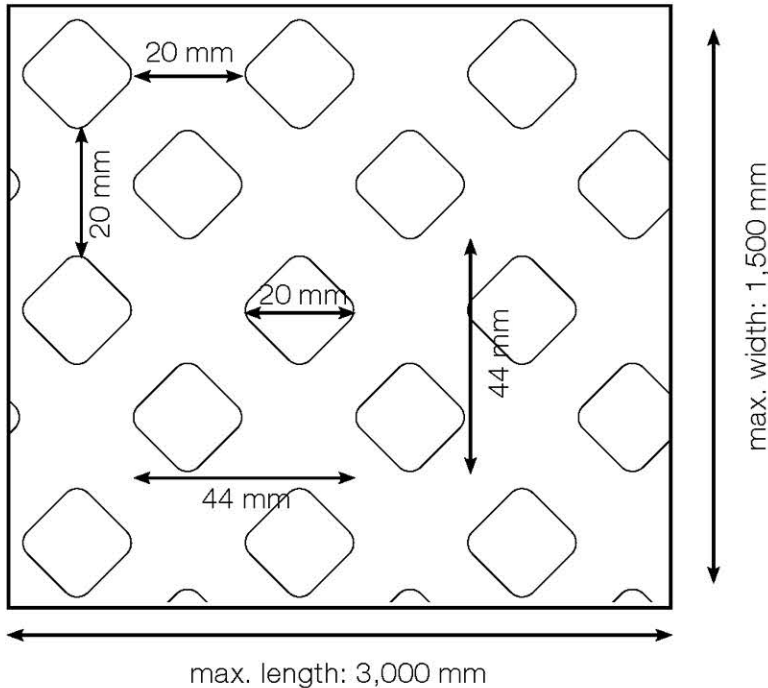
## **Velaro series 500**

Striking facade design in appearance and function



# Data sheet

## Velaro series 500



A striking appearance, functional aesthetics, and uncompromising attention to detail – that's facade design with the Velaro series. Embossed and punched facade elements in aluminum or stainless steel are an excit-

ing architectural tool to create impressive cladding effects, playing with alignments, mirroring, and reflected sunlight. At the same time, Velaro facades provide a long-lasting, weather-resistant, mainte-

nance-free, and valuable solution for both interior and exterior design.

**Velaro 500 series stands out with its unusual optical alignments and a sumptuous brushed finish.**

### Technical data:

Type	Material	Surface	Possible material thickness	Possible dimensions
Series 501	AISI 304 / AISI 316L	2B polished K240	1 / 2 / 3 / 4 mm	max. 3,000 x 1,500 mm

### Zuständige Industrievertretung:

[www.mantz-online.de](http://www.mantz-online.de)

# Mantz

Industrieprodukte

**Stefan Mantz**

Mantz Industrieprodukte  
Hechendorfer Str. 132  
D-82211 Herrsching

Telefon: +49 8152 399627  
Telefax: +49 8152 399628  
Mobil: +49 173 3607399  
E-Mail: [info@mantz-online.de](mailto:info@mantz-online.de)